

**STOCK Live's**

# **Real Time DATA FEEDER**

*for AmiBroker*

**Version 2.0.0**

**Note** : Current version is a BETA version . If you face any problem in using it , you encounter any error in the software or if you have any feedback for the software , please send a mail to [StockLive2008@gmail.com](mailto:StockLive2008@gmail.com) . Your response is valuable for us for improving the quality of the software .

# 1. Introduction

AmiBroker is the most comprehensive charting, analysis and back testing platform available today, look at [www.amibroker.com](http://www.amibroker.com) for the details.

Real Time DATA FEEDER for AmiBroker is a new Software from Stock Live team which is dedicated to provide simplest and affordable solutions for people involved in Indian Stock market .

Though Stock Live Professional already supports data feeding to AmiBroker , but it was felt that to enhance usability & performance and to reduce complexity , there should be a software which is totally dedicated for data feeding . No other job at the time of doing data feeding .

So the team has come with this software which is much SIMPLER but far more POWERFUL as compared to the same module in Stock Live Professional .

Some of the main features of this Software are ::

- Very User Friendly . Even people who are not much familiar with Computer can use it without going through any manual .
  - Almost No Configuration required for connecting it to AmiBroker
  - Based on .NET technology
  - Performance wise Highly efficient as this software is highly multithreaded .
  - Backfill with 1-min , 5-min & EOD data in very short span of time
  - Data download as Text files which can be used in many Technical Analysis softwares
  - Real Time data feeding at very fast rate ( 5-10 sec chart refresh rate )
  - Support for 180-200 Stocks
  - License will not be lost even if you format your computer.
- ... and many more ....

## **Disclaimer ::**

All data is retrieved from Yahoo Server . So for any discrepancies in data quality , delay in data or not availability of data for some time , Stock Live is not responsible .

a) **Basic Configuration Needed :**

**Two conditions MUST be satisfied** to get the Latest Real Time Data and Refresh of Data after every 10-15 sec ::

(1) Change these settings for proper **Data Refresh** ::

**For Internet Explorer 6.0 or before ::**

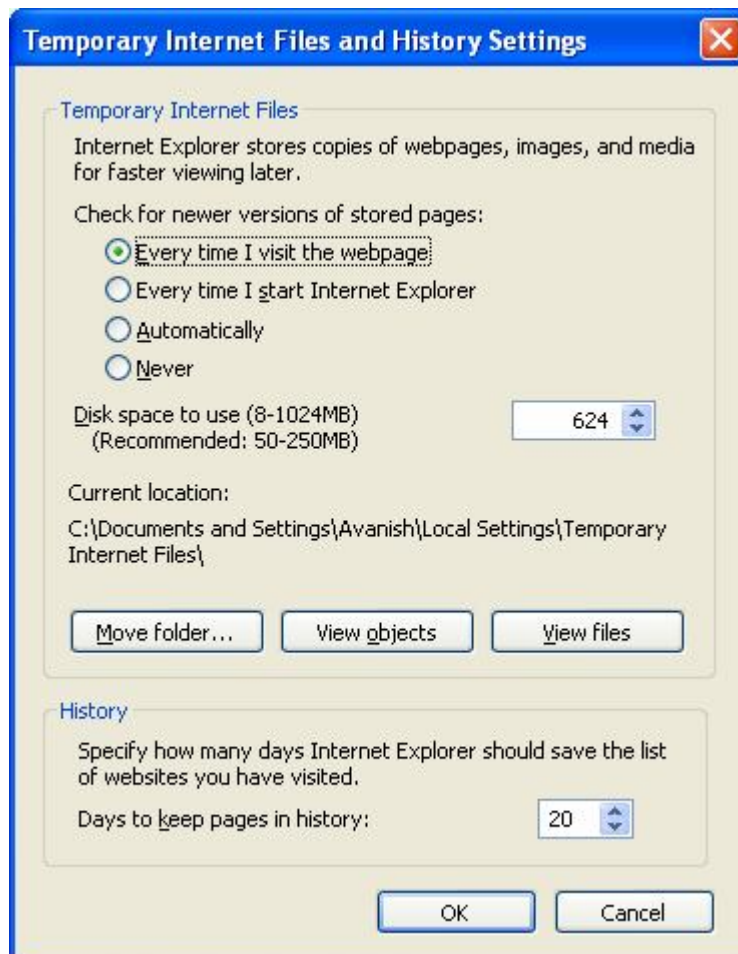
Internet Explorer > Tools > General Tab > Settings >

Choose "Every visit to the page " in check for newer versions of stored pages .

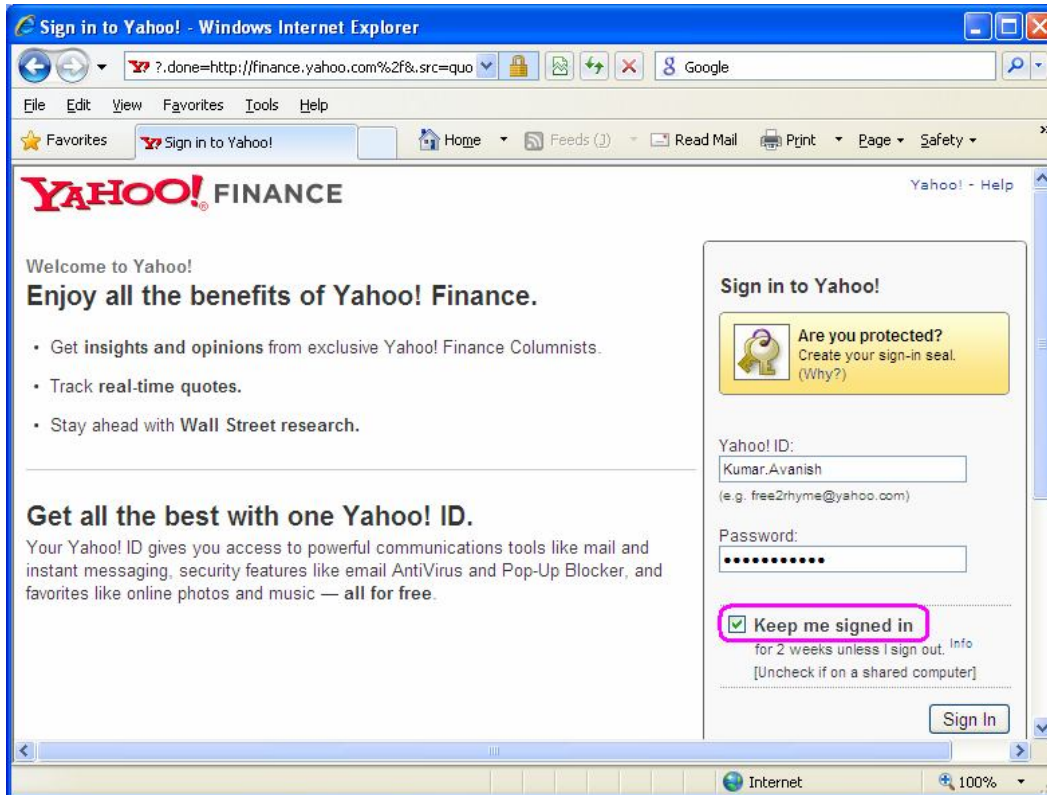
**For Internet Explorer 7.0 or more::**

Internet Explorer > Tools > General Tab > "**Browsing History**" > Settings >

Choose "Every visit to the page " in check for newer versions of stored pages .



- (2) To get the **Real Time Data** without any delay ::  
Keep yourself Logged-in in <http://finance.yahoo.com> .



### Recommended System Requirements ::

Operating System	::	Windows XP/2K/Vista
Intel Pentium	::	1.5 GHz or More
RAM	::	1GB or More
HDD Size	::	120 GB HDD ( total ) or More
Graphics Card	::	256 color (high color recommended)
Screen Resolution	::	1024 X 768 or Higher
Internet type	::	Broadband
Internet Speed	::	256 Kbps or More

### Pre-requisite ::

Microsoft .NET Framework Version 2.0 or more latest is required to be present in the system . Download links ::

<http://www.microsoft.com/downloads/details.aspx?FamilyID=0856EACB-4362-4B0D-8EDD-AAB15C5E04F5&displaylang=en>

OR

<http://msdn.microsoft.com/en-us/netframework/default.aspx> ( Download the latest .net Framework )

## 2. Tutorial

Though we have designed this software so simpler so that that user doesn't need help document to know how to use it but it still some users are comfortable in first going through the user manual and then shift to the software .

Here are some description about some basic operations you can do with the different controls on this software ::

**Stock Live DATA FEEDER 2.0.0 for AmiBroker: REGISTERED VERSION**

EXPIRY DATE  
12/31/2009

HELP

Select All  NIFTY  SENSEX

SL	Stock Name	Name in AmiBroker
<input type="checkbox"/>	1 Infosys Technologies Ltd.	INFOSYSTC
<input type="checkbox"/>	2 Jaiprakash Associates Ltd.	JPASSOCIA
<input checked="" type="checkbox"/>	3 NTPC Ltd	NTPC
<input type="checkbox"/>	4 Reliance Capital Ltd.	RELCAPITA
<input checked="" type="checkbox"/>	5 Reliance Communications Ltd.	RCOM
<input type="checkbox"/>	6 Reliance Industries Ltd.	RELIANCE
<input type="checkbox"/>	7 Reliance Natural Resources Ltd.	RNRL
<input type="checkbox"/>	8 Reliance Power Ltd	RPOWER
<input type="checkbox"/>	9 Rolta India Ltd.	ROLTA
<input type="checkbox"/>	10 Satyam Computer Services Ltd.	SATYAMCOM
<input type="checkbox"/>	11 State Bank of India	SBIN
<input type="checkbox"/>	12 Suzlon Energy Ltd.	SUZLON
<input checked="" type="checkbox"/>	13 Unitech Ltd.	UNITECH
<input type="checkbox"/>	14 YES Bank Ltd.	YESBANK
<input type="checkbox"/>	15 ICICI Bank Ltd.	ICICIBANK
<input type="checkbox"/>	16 Cairn industries	CAIRN
<input type="checkbox"/>	17 Jaiprakash HydroPower Ltd.	JPHYDRO
<input type="checkbox"/>	18 Power Grid	POWGRI
<input type="checkbox"/>	19 Bank of Baroda	BANKBAROD
<input checked="" type="checkbox"/>	20 Mercator Lines Ltd.	MLL
<input type="checkbox"/>	21 Balramour Chini Mills Ltd.	BALRAMCHI

REAL TIME DATA

START STOP

Chart Refresh Rate  
10 Sec

A STOCK Live! Product  
www.StockLive.in

Update your Data Feeder to ver 1.9.0 . Real Time Data at Less than Rs 20/month\* .

a) **Adding a stock**



This button adds a Stock in the Data Feeder stock list . In the Add Stock Dialog, you need to enter at least 3 characters of Stock Name and you will get a list of Stocks to choose from to add. The newly added stock is by default checked .

Note : The stocks added this way are added in the data feeder software's data base only and not in the AmiBroker Symbol list . To add the stock also in AmiBroker , you need to just click on "ADD STOCKS" button .

b) **Deleting a stock**



This button deletes the checked Stocks from the stock list of data feeder only. If you want to delete the same stocks also from AmiBroker 's symbol list , you need to just click on "SYNCHRONIZE" button .

c) **Add New Stocks**



This button is used for adding those stocks which are newly listed in the share market or which you are not able to find in the list while using ADD button.

 A dialog box with a blue title bar that reads "Add a New Stock which you didn't find in ADD". The background is light blue. It contains the following elements:
 

- A text label "Company Name" above a text input field containing "Dena Networks Ltd".
- A button labeled "Launch Yahoo Finance site for finding Yahoo Code".
- A text label "Write Yahoo NSE Code here" above a text input field containing "DENA".
- A button labeled "Validate NSE Code".
- The text "Validation PASSED" displayed below the validation button.
- Two buttons at the bottom: "Add" and "Cancel".

You can find the new stocks Yahoo code in Yahoo finance link . You need to validate the Yahoo Code first , then only Add button will be enabled .

#### d) Making connection to AmiBroker



This button is used to establish connection to AmiBroker. To establish proper connection to AmiBroker, make sure that ONLY ONE instance of AmiBroker is running. If a message is popped up that more than one instance of AmiBroker is running, kill all instances of AmiBroker from Task Manager. For this open Task Manager and go to Process tab and then Sort by name and kill all "Broker.exe" processes.

#### e) Add Symbols to AmiBroker

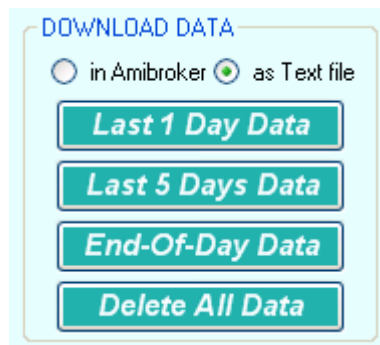
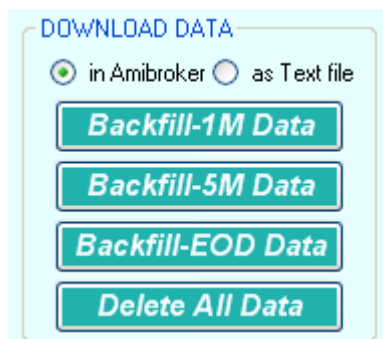
This button is used to Add the Checked stocks in Stocks list to AmiBroker as Symbols. If you have already some Symbols in Amibroker, they are kept as they are.

#### f) Synchronize Symbols to AmiBroker

This button is used to synchronize Data Feeder's stock list to AmiBroker's symbol list. This means that if there are already some Symbols in AmiBroker they are removed from there if those symbols are not in data Feeder's stock list. So after synchronization, Symbol list in Amibroker exactly matches with Stock List of Data Feeder.

**Note ::** Sometimes after Synchronization, Symbol list is not refreshed. In that case, again click on SYNCHRONIZE button. You will get the Symbols synchronized.

## DOWNLOAD DATA



Data can be backfilled in AmiBroker or can be downloaded as TXT files . Choose radio buttons according to your choice.

### g) Backfill with 1-min Data

*Backfill-1M Data*

### Download Last 1 day Data

*Last 1 Day Data*

This button is used to back fill/download data in AmiBroker / <C:\StocLiveDF\ONEDAY> for Checked stocks in Data Feeder's stock list with 1-min data for last One day . If you use this during market hours , you may get data for the period from 9:55 AM to the current time of that day.

**Note ::** Don't forget to Add or Synchronize Stocks to AmiBroker before using this button if you have recently added/checked some stocks in Data Feeder 's stocks list for data feeding .

### h) Backfill with 5-min Data

*Backfill-5M Data*

### Download Last 5 days Data

*Last 5 Days Data*

This button is used to back fill/download data in AmiBroker / <C:\StocLiveDF\FIVEDAYS> for Checked stocks in Data Feeder's stock list with 5-min data for last Five days . If you use this during market hours , you may get data for last Four days & data for the period from 9:55 AM to the current time of that day.

**Note ::** Don't forget to Add or Synchronize Stocks to AmiBroker before using this button if you have recently added/checked some stocks in Data Feeder 's stocks list for data feeding .

i) **Backfill with EOD data**  
**Download EOD data**




This button is used to back fill/download data in AmiBroker / <C:\StocLiveDF\EOD> for Checked stocks in Data Feeder's stock list with EOD data for last 6-7 Years .

**Note ::** Don't forget to Add or Synchronize Stocks to AmiBroker before using this button if you have recently added/checked some stocks in Data Feeder 's stocks list for data feeding .

j) **Delete All Data from AmiBroker/Data folders**



This button deletes all data from AmiBroker's current database/ data folders ( ONEDAY , FIVEDAYS & EOD folders in C:\StockLiveDF ) . Use this with caution . After this your database will be ready for all new start with Data Feeder .

k) **Real Time Data Feeding to AmiBroker**



This set of controls are used for Real Time data feeding to AmiBroker . It feeds data to AmiBroker for the Checked Stocks in Stock List . Select "Chart Refresh Rate" after deciding your system configuration and internet speed . Lower the system configuration and internet system , you should choose higher refresh rate. By default the selection is 10 sec.

**Note ::** Don't forget to Add or Synchronize Stocks to AmiBroker before using this button if you have recently added/checked some stocks in Data Feeder 's stocks list for data feeding .

l) **Opening Help Doc**



This button is used to open this Help document.

### m) Operations on Stock List

SL	Stock Name	Name in AmiBroker
<input type="checkbox"/>	1 ICICI Bank Ltd.	ICICIBANK
<input checked="" type="checkbox"/>	2 Infosys Technologies Ltd.	INFOSYSTC
<input type="checkbox"/>	3 Ispat Industries Ltd.	ISPATIND
<input type="checkbox"/>	4 Jaiprakash Associates Ltd.	JPASSOCIA
<input type="checkbox"/>	5 Mangalore Refinery And Petrochemic...	MRPL
<input type="checkbox"/>	6 Nagarjuna Fertilisers & Chemicals Ltd.	NAGARFERT
<input type="checkbox"/>	7 Neyveli Lignite Corporation Ltd.	NEYVELILI
<input checked="" type="checkbox"/>	8 Noida Toll Bridge Company Ltd.	NOIDATOLL
<input type="checkbox"/>	9 NTPC Ltd	NTPC
<input type="checkbox"/>	10 Reliance Capital Ltd.	RELCAPITA
<input type="checkbox"/>	11 Reliance Communications Ltd.	RCOM
<input checked="" type="checkbox"/>	12 Reliance Industries Ltd.	RELIANCE
<input type="checkbox"/>	13 Reliance Natural Resources Ltd.	RNRL
<input type="checkbox"/>	14 Reliance Power Ltd	RPOWER
<input type="checkbox"/>	15 Religare Enterprises	RELIGARE
<input checked="" type="checkbox"/>	16 Rolta India Ltd.	ROLTA
<input type="checkbox"/>	17 Satyam Computer Services Ltd.	SATYAMCOM
<input type="checkbox"/>	18 State Bank of India	SBIN
<input type="checkbox"/>	19 Steel Authority of India (SAIL) Ltd.	SAIL
<input type="checkbox"/>	20 Suzlon Energy Ltd.	SUZLON

Here Select All checks all stocks in Stock List . Nifty and Sensex are not included in this operation . Nifty & Sensex are selected by default . Real time data feeding is not done for Sensex , only Backfill is done for it .

**Note ::** Don't forget to Add or Synchronize Stocks to AmiBroker before using this button if you have recently added/checked some stocks in Data Feeder 's stocks list for data feeding .

### n) Registration of Data Feeder

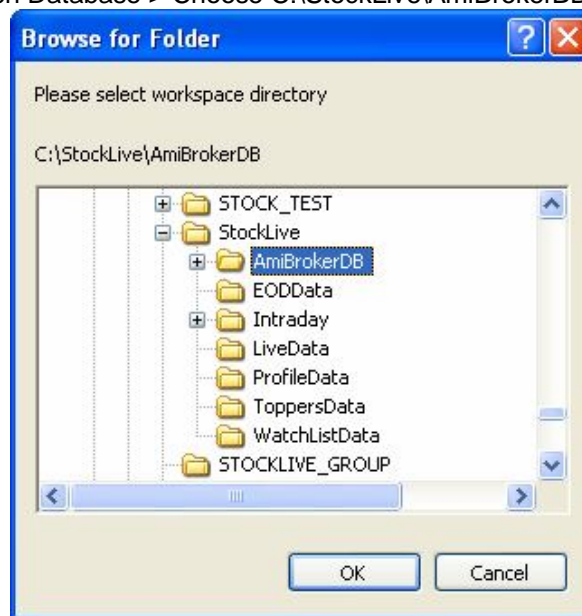


This button helps in Registering the software .

### o) Setting up separate database in AmiBroker for Data Feeder

Though Data Fdder will work on your existing database but to just preserve you older database and starting all new with Stock Live Data Feeder , you can create a separate database exclusively for Data Feeder by following simple steps :

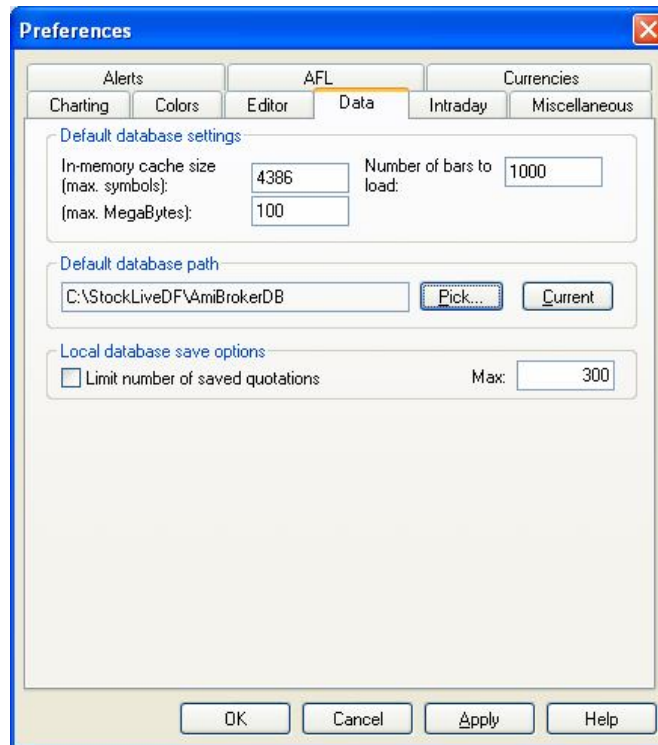
- Open C:\StockLiveDF\AmiBrokerDB
- Extract ExtractHere.ZIP file in the same folder
- Open AmiBroker
  - File Menu > Open Database > Choose C:\StockLive\AmiBrokerBD and click on OK



If you want that by default this database should open every time you open AmiBroker, after above mentioned operations do following :

AmiBroker > Tools > Preferences > Data Tab

Then in Default Database path choose "Current" .



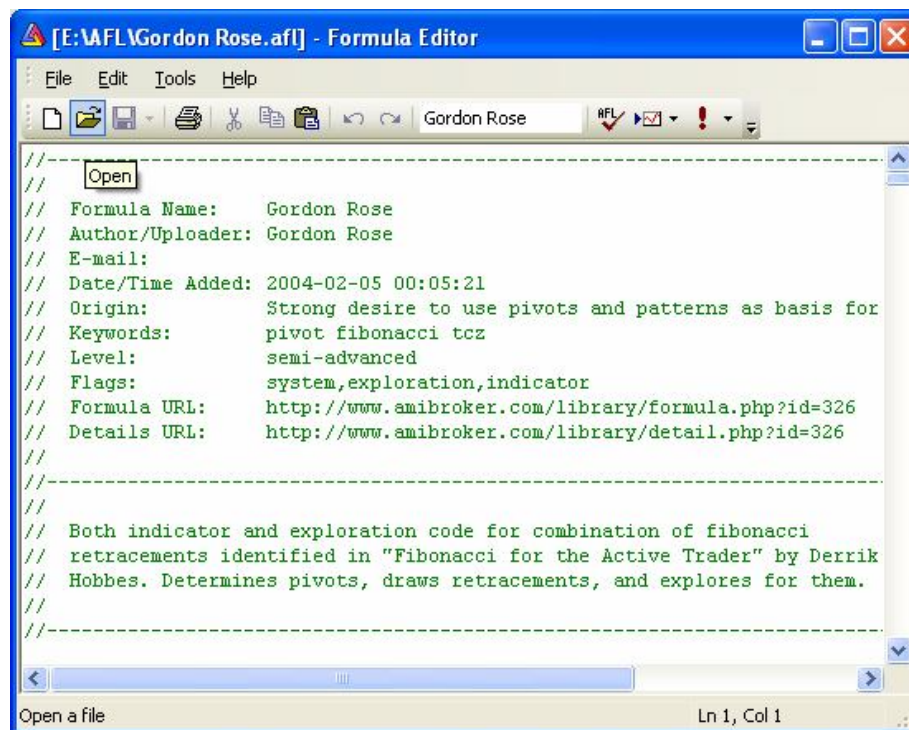
**p) Use AFL files for Technical Analysis in AmiBroker**

Open AmiBroker.

Analysis > Formula Editor

You will get new Window of Formula Editor .

Open an AFL file



Then in this new window , got to “Tools” and click on “Apply Indicator” .  
 Finally close this window . Your AmiBroker window will have indicator for this  
 AFL .

Don't forget to Choose Tick in Amibroker Chart :

